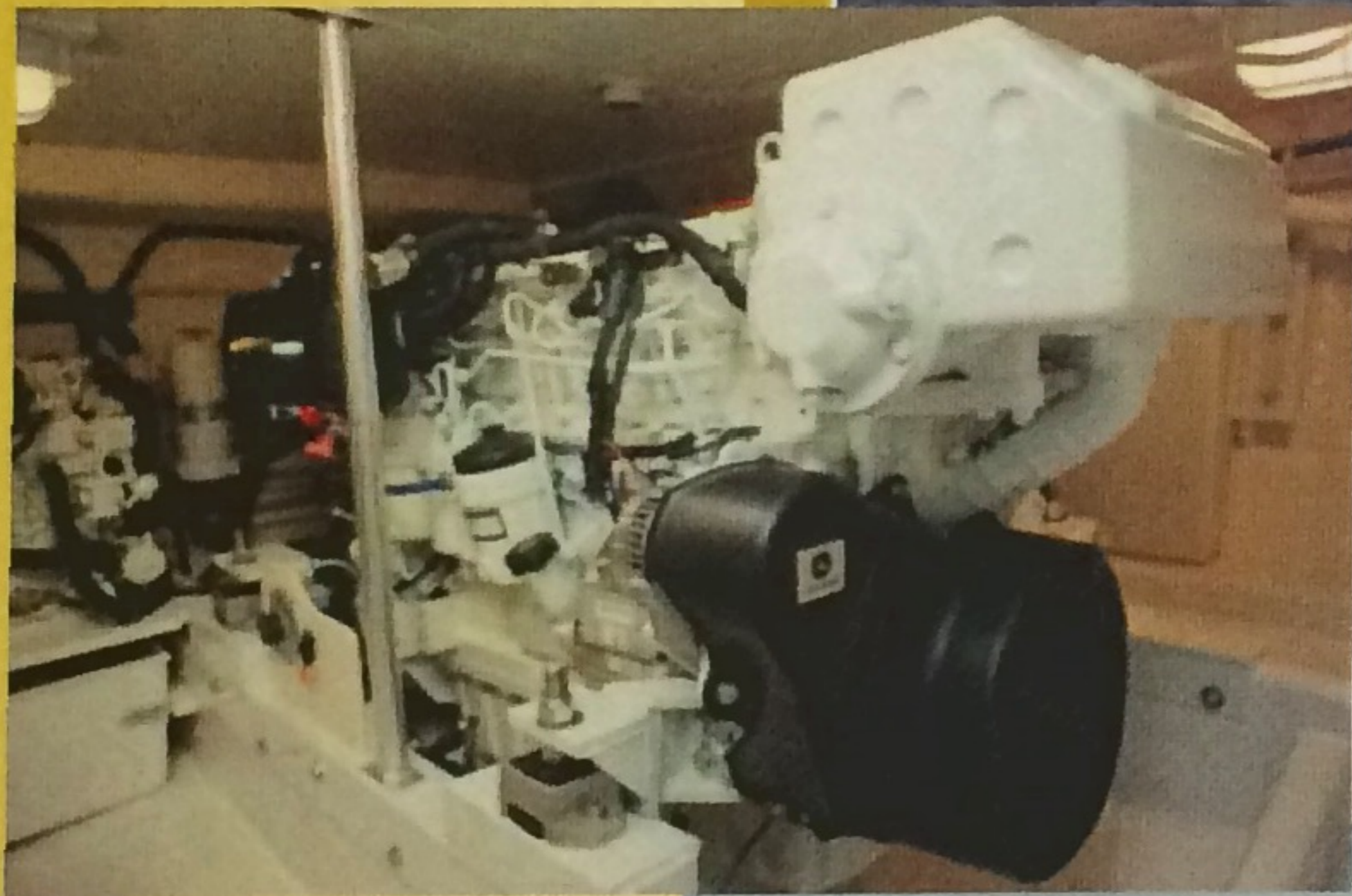




Maine Coaster 42' Charter

Length w/o pulpit 42'
Beam 14'9"
Draft 44"
Fuel 660 gals.
Displacement 36,000 lbs.



Henriques Yachts, Inc.
198 Hilton Avenue
Bayville, NJ 08721

Tel: 732-269-1180
Fax: 732-269-1606

www.henriquesyachts.net

email:

henriques@henriquesyachts.net



Maine Coaster 42' Charter—Model

1. Hull

Solid fiberglass bottom and sides of hull
with core bottom paint and boot stripe

2. Deck

One piece fiberglass with pulpit, cockpit and cabin floor,
(2) Fishboxes with gas springs and live baitwell, walk around side decks and sliding side doors,
main entrance door and head door, side aluminum hand rails, (8) cleats, (2) Hauser pipes, heavy duty rubrail,
(2) portholes, frameless tempered glass, windows forward, hatch, anchor and 600' line

3. Engines / Underwater Equipment

Twin diesel engines, shafts with collar zincs, struts and rudders are bronze with button zincs, Racor filters, fuel shutoff valves,
bronze props, recessed trim tabs, acoustic insulation, eel grass strainer with zincs, driplless shaft logs, built in fiberglass fuel tank
with fuel sender and gauge, hydraulic steering with destroyer type steering wheel

4. Main Cabin

Cabin lined with birch panel (2) pilot seats, (5) double seats or similar arrangement, day head with door in cockpit with electric toilet
& holding tank, head with electric toilet, shower stall and vanity, galley with 120V refrigerator, microwave and sink.

5. Electric

Electric 12V. panel and main switch, 120V electric system, (1) 30AMP shore cord with transfer switch, 7.6KW generator
(2) D batteries with switches and battery parallel, (1) battery for electronics and charger isolator, 50AMP battery charger,
salt water washdown, high water alarm, (4) bilge pumps, (10) cabin lights, navigation lights, (2) cockpit spreader lights,
(3) wipers, grounding system with Transom zincs.

6. Water System

120 gallon tank, pressure pump, hot and cold water system, fresh water washdown

| | |
|-------------------|-------------|
| Length w/o Pulpit | 42' |
| Beam | 14' 9" |
| Draft | 44" |
| Fuel | 660 GALS |
| Displacement | 36,000 LBS. |

For additional information and pricing, please contact:

Henriques Yachts, Inc.

198 Hilton Avenue

Bayville, NJ 08721

Tel: 732-269-1180 • Fax: 732-269-1606

E-mail: Henriques@HenriquesYachts.net

www.HenriquesYachts.net

42' HENRIQUES CHARTER BOAT MODEL WALK AROUND

1. HULL

SOLID FIBERGLASS BOTTOM AND SIDES OF HULL WITH CORE BOTTOM PAINT AND BOOT STRIPE

2. DECK

ONE PIECE FIBERGLASS WITH PULPIT, COCKPIT AND CABIN FLOOR,(2) FISHBOXES WITH GAS SPRINGS AND LIVE BAITWELL, WALK AROUND SIDE DECKS AND SLIDING SIDE DOORS, MAN ENTRANCE DOOR AND HEAD DOOR, SIDE ALUMINUM HAND RAILS, (8) CLEATS, (2) HAUSER PIPES, HEAVY DUTY RUBRALL, (2) PORTHOLES, FRAMELESS TEMPERED GLASS, WINDOWS FORWARD, HATCH, ANCHOR AND 600' LINE

3. ENGINES / UNDERWATER EQUIPMENT

TWIN DIESEL ENGINES, SHAFTS WITH COLLAR ZTNCS, STRUTS AND RUDDERS ARE BRONZE WITH BUTTON ZINCS, RACOR FILTERS, FUEL SHUTOFF VALVES, BRONZE PROPS, RECESSED TRIM TABS, ACOUSTIC INSULATION, EEL GRASS STRAINERS WITH ZINCS, DRIPLESS SHAFT LOGS, BUILT IN FIBERGLASS FUEL TANK WITH FUEL SENDER AND GAUGE, HYDRAULIC STEERING WITH DESTROYER TYPE STEERING WHEEL

4. MAIN CABIN

CABIN LINED WITH BIRCH PANEL (2) PILOT SEATS, (5) DOUBLE SEATS OR SLIVHLAR ARRANGEMENT, DAY HEAD WITH DOOR IN COCKPIT WITH ELECTRIC TOILET & HOLDING TANK, HEAD WITH ELECTRIC TOILET SHOWER STALL AND VANITY, GALLEY WITH 120V REFRIGERATOR, MICROWAVE AND SINK

ELECTRIC

ELECTRIC 12V. PANEL AND MAIN SWITCH, 120V ELECTRIC SYSTEM, (1) 30AMP SHORE CORD WITH TRANSFER SWITCH, 5KW WESTERBEKE GENERATOR (2) D BATTERIES WITH SWITCHES AND BATTERY PARALLEL, (1) BATTERY FOR ELECTRONICS AND CHARGER ISOLATOR, 50 AMP BATTERY CHARGER, SALT WATER WASHDOWN, HIGH WATER ALARM, (4) BILGE PUIVIPS, (10) CABIN LIGHTS, NAVIGATION LIGHTS, (2) COCKPIT SPREADER LIGHTS, (3) WIPERS, GROUNDING SYSTEM WITH TRANSOM ZINCS

5. WATER SYSTEM

120 GALLON TANK, PRESSURE PUMP, HOT AND COLD WATER SYSTEM, FRESH WATER WASHDOWN

ENGINES: TWIN CUMMINS DIESEL QUANTUM SERIES QSM1 1@455HP