

Henriques
YACHTS, INC

*Fish the Boats
the Pros Use*



42' EXPRESS

* Tower optional

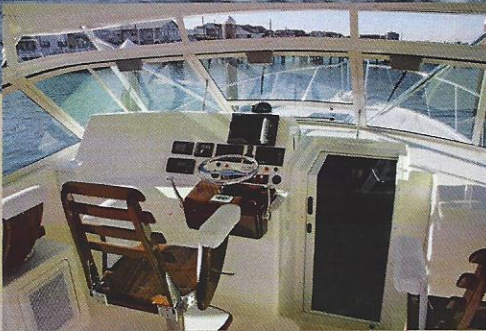
Henriques Yachts, Inc.

198 Hilton Avenue • Bayville, NJ 08721

T: 732-269-1180 • F: 732-269-1606

henriques@henriquesyachts.net

www.henriquesyachts.com





"Fish the Boats the Pros Use"

42' EXPRESS

L.O.A. - 42'0" without pulpit

Beam - 14'9" Draft - 45"

Displacement - 36,500 Lbs.

Fuel Capacity - 660 Gallons

Water Capacity - 120 Gallons

ENGINES & PROPULSION

- Twin Diesel engines with reduction gears
- AquaMet shafts with collar zincs
- Intermediate & main struts, manganese bronze rudders, bronze with button zincs
- Racor fuel/water separator filters: Engines & Genset
- Fuel shutoff valves
- Bronze propellers
- Bronze eel grass strainers with zincs
- Trim tabs (recessed)
- Acoustic & thermal insulation
- Fuel lines to engines
- Basket-type sea strainers for genset & A/C intakes
- Packing glands - dripless
- Engine mufflers
- Fiberglass fuel tank
- Fuel deck fill

ELECTRICAL & LIGHTING

- 9kw Diesel generator with deluxe panel with sound shield
- Heavy duty engine batteries
- Generator battery
- Fiberglass battery boxes
- 50 Amp battery charger
- Battery parallel
- Battery switches
- Voltage polarity indicator
- Internal bonding system
- Bonded transom zinc plate -
- Power transfer switch
- 220-50 Amp shore service
- 50' Shore cord
- AC & DC Distribution panels
- 110v Duplex receptacles
- Engine room lights
- AC/DC cabin lighting throughout
- Navigation lights

DECK OUTFITTING & SAFETY

- Fiberglass bow pulpit
- Aluminum bow rail & handrails
- Pulpit anchor roller
- Non skid decking
- Deck hawse pipe

- Anchor rope pipe
- Mooring cleats
- Heavy duty rubrail with SIS insert
- Watertight hull compartments
- Automatic bilge pumps
- Bilge pump warning lights
- Hydraulic steering
- Dual air horns
- Anchor & 200' anchor line
- Dock lines
- Flare kit
- Life jackets
- Ring buoy
- Fog bell
- Portable fire extinguishers

HELM

- Molded fiberglass enclosure w/ tempered glass
- Engine instrument panels
- Engine warning alarms
- Steering station with electronic Glendinning controls
- SIS Steering wheel
- Pompanette helm seat with footrest
- Pompanette companion seats (2)
- Flush mount panel for electronics
- Lockable overhead rod holders

STORAGE

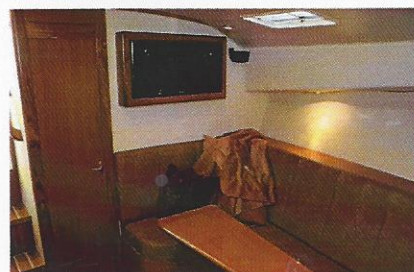
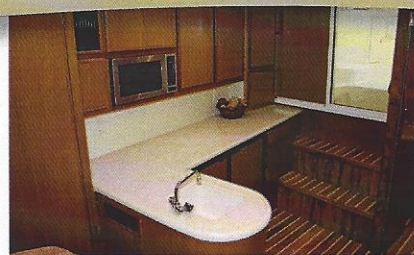
- Storage compartments
- Lockable rod storage
- Tackle lockers
- Port & starboard settees with storage below

STATEROOM

- Choice of layouts
- Teak Interior
- Choice of fabrics, color; & decor
- Overhead hatch/portlight
- Air conditioning & heat
- Amtico flooring
- Cedar lined hanging lockers
- Mattresses, covers, pillow shams, pillows
- Vinyl wallcoverings
- Storage compartments
- Reading lights

HEAD

- Stall shower with tempered glass door
- Shower sump pump
- Handheld shower head
- Electric toilet
- 15 Gal. macerate & discharge holding
- Y-valve
- Medicine cabinet with mirror
- Corian sink & vanity
- Sink faucet
- 11 Ov Receptacle outlet
- Towel bar
- Paper towel holder
- Vanity light
- Vinyl headliner & wallcoverings
- Amtico flooring
- Storage compartments



WATER SYSTEM

- Hot & cold water
- Pressure demand water pump
- 12 Gal. Hot water tanks
- Aluminum water tanks
- Deck water fills

GALLEY

- Microwave
- 12v/110v Side-by-side refrigerator/freezer
- Corian sink w/single lever faucet
- 110v Receptacle outlet
- Storage cabinets & drawers
- Corian countertops
- Amtico flooring
- Single stovetop

DINETTE

- Convertible dinette
- Cushions
- Lighting
- 110v Outlets
- Corian table

COCKPIT

- Walkthru transom door
- Cockpit bolsters
- Tackle center
- Freshwater washdown system
- Saltwater washdown system
- Reinforced cockpit sole for fighting chair
- Cockpit sink
- Cockpit cooler

GENERAL

- Solid fiberglass construction
- Hand layed up hull
- Bronze thru hulls with seacocks
- Awlgrip bilge areas
- Bottom paint
- Boot stripe
- Zinc anodes
- Launch & make ready
- Fuel not included

Company reserves the right to make changes in standard and optional equipment without notice.

