

FOR SALE

1999 38' Sportfisherman Henriques

Powered with Twin Volvo TAMD 74P EDC @ 480 HP



- **Engine Hours:** Approx. 730
- **L.O.A.** 41' 5"
- **Beam:** 13' 10"
- **Draft:** 46"
- **Weight:** 28,000 lbs.
- **Fuel Capacity:** 415 gal.
- **Water capacity:** 75 gal.
- **Gen:** Westerbeke 8 KW



More Details on Next Page

Asking ~~\$240,000~~ \$220,000

Call Or Email Us For A Showing – Boat Located At The Jersey Shore

198 Hilton Ave. Bayville, NJ 08721

P: 732-269-1180 E: info@henriquesyachts.com

www.henriquesyachts.com

Henriques
YACHTS, INC.

DETAILS

1999 38' Sportfisherman Henriques

Engine & Mechanical

- Re-Powered with Twin Volvos TAMD 74s @ 480 HP in 2017 - Cruises 23 Knots
- 8KW Westerbeke Gen Set – 2725 hours
- Deep Cycle Batteries
- Smartplug Shorepower dual 30 amp/115v, w/cord
- Racor Fuel/water Filters
- Sea Strainers
- Charles Battery Charger 40 amp
- Oil Change System
- Engine Room Light
- Engine Room Sound Insulation
- Freshwater hose bib

Interior

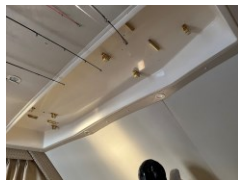
- Ash wood interior with white wash finish
- Master Stateroom: Island bed with storage above, overhead hatch, cedar-lined closet, TV and storage compartments below
- Salon: entertainment center on port side & on stbd side seating with ottoman and ample storage beneath
- Sony TV with Sony dvd player & speakers in salon
- Fusion Stereo
- Galley Down Layout: Newer Norcold refrigerator & freezer, Corian top, 2 burner stove top, microwave, Corian sink & plenty of cabinets/drawers
- Face-to-Face Dinette seating on port side with a table top that can be converted to a double bed, storage cabinets and lamp
- White washed vinyl planking in head and galley
- Carpeting in salon and fwd stateroom
- Overhead Rod Storage above galley
- Engine room access in Galley/Salon
- Private head, bi-fold shower stall, toilet, vanity, mirror & Overhead Hatch
- Holding Tank 20 gallons
- 110v outlets
- Cabin down lighting
- Cabin AC/Heat – Newer unit
- Hot water heater
- 12v distribution panel – Black finish

Helm & Electronics

- Garmin Touchscreen 7612
- Garmin 4208 screen
- Simrad Auto Pilot
- (2) ICOM VHF's
- AIS
- Antennas
- Airmar 275lhw Transducer
- Volvo Engine Digital Displays
- Direct TV KBH-TV1 satellite dish
- Fusion Stereo & with JL speakers in bridge
- Illuminated Compass
- Edson Steering Wheel
- Electric trim tabs - Bennett
- (2) Captain Helm Chairs – Teak Backs
- Fiberglass console with front bench seating
- New Anina Canvas Bridge enclosure (2023)
- Rocket launcher with (5) gold holders (2) silver holders

Cockpit & Deck

- Large cockpit – with synthetic teak decking
- 2 Fishboxes
- Maserated Port fish box
- Portside drink box with storage
- Drink box & cutting board on Stbd side
- Tackle Drawers
- Molded-in Transom livewell
- Walk-thru Transom Door
- Swim Ladder
- Gunnel & Transom Rod Holders (10 total)
- Rod Holders on wings (6 Total)
- Cockpit Bolsters
- Cockpit speakers
- Washdown system, fresh and saltwater
- Durabrite commercial 24v light bar
- (4) Flood lights on hardtop
- Lumitec cockpit lights
- New (4) Underwater Lights - Lumitec Seablaze
- Outriggers & Center Rigger
- Aluminum ladder to bridge
- Good Automatic Windlass
- 6 Person Life Raft



Asking ~~\$240,000~~ \$220,000

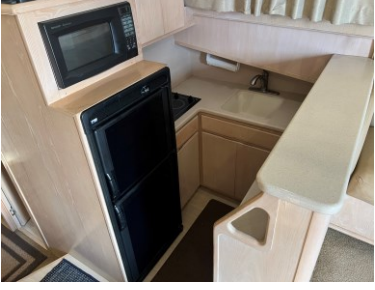
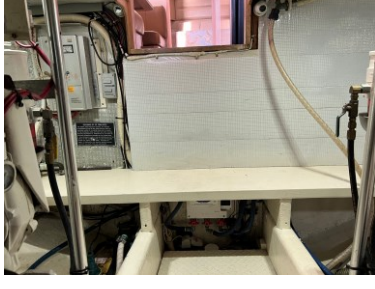
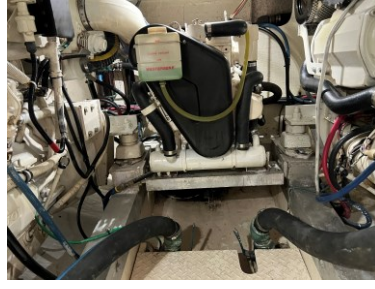
198 Hilton Ave. Bayville, NJ 08721

P: 732-269-1180 E: info@henriquesyachts.com

www.henriquesyachts.com

Henriques
YACHTS, INC.

Additional Pictures 1999 38' Sportfisherman Henriques



198 Hilton Ave. Bayville, NJ 08721
P: 732-269-1180 E: info@henriquesyachts.com
www.henriquesyachts.com

