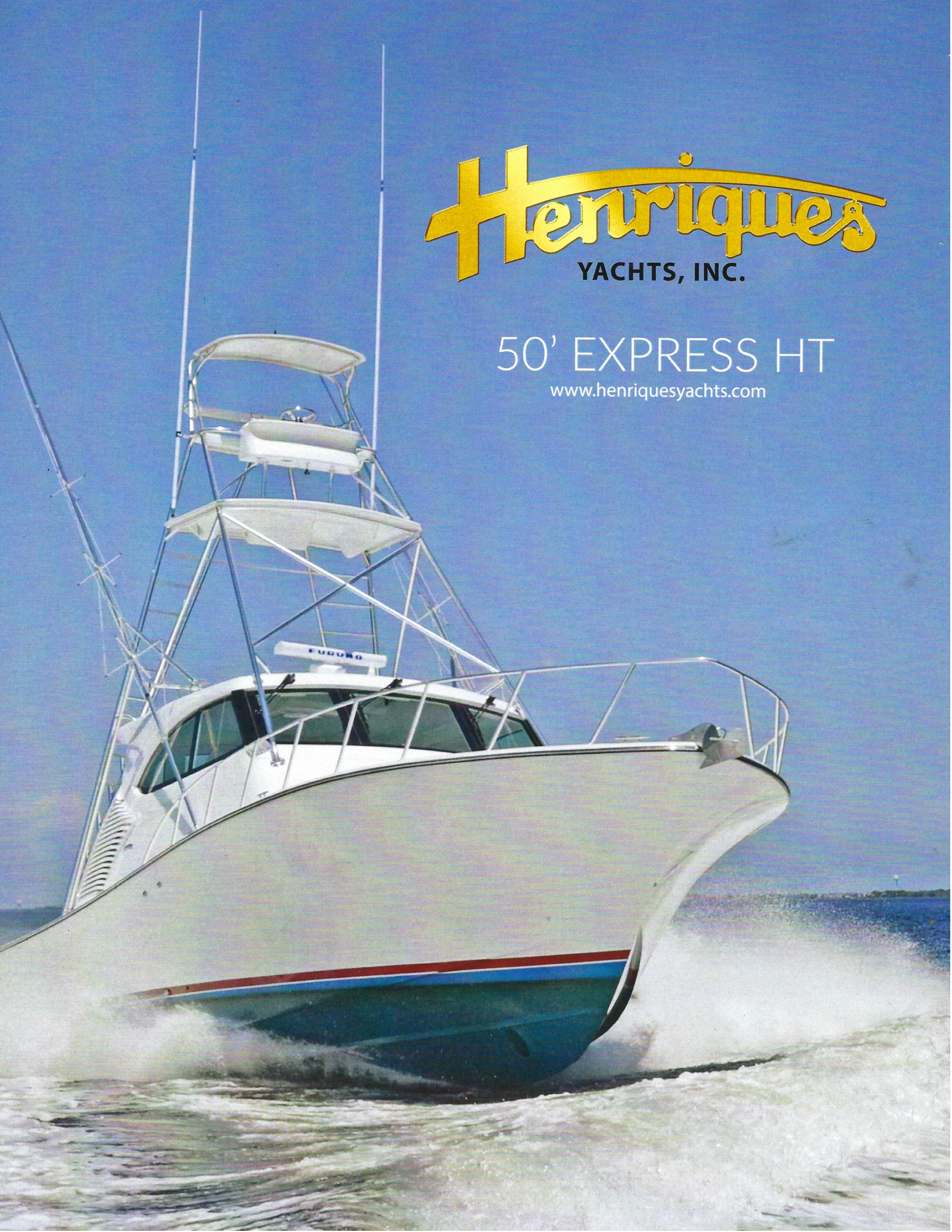


Henriques

YACHTS, INC.

50' EXPRESS HT

www.henriquesyachts.com



Henriques

YACHTS, INC.

50' EXPRESS HT

www.henriquesyachts.com

MECHANICAL

Double tapered stainless steel shafts w/collar zinc
Main Struts (manganese bronze)
Intermediate Struts (manganese bronze)
Rudders (manganese bronze) w/button zinc
Racor fuel/water separator filters, engines & gen
Oil change systems-engines, trans. & gen
Aluminum frame engine beds
Engine warning alarms
Nibral Propellers
Fiberglass fuel tank and (2)Alum. Fuel tanks
Deck fills
Recessed trim tabs
Bilge areas are awlgripped
Awlgrip paint finish in engine room
Acoustic and thermal insulation
Bronze thru hulls and seacocks below waterline
Bronze eel grass strainers with zincs
Basket type sea strainers for gen, air cond. Intakes
All underwater hoses double stainless steel clamped
Automatic bilge pumps (5)
Air Conditioning w/reverse cycle heat
Automatic high water alarm
Molded engine room overhead
120 volt outlet in engine room
Dripless shaft logs
Halon system with discharge alarm
Forced air engine room ventilation
Emergency bilge y valve pump out

ELECTRICAL

50 amp 125/250 volt electrical services
Voltage amperage, polarity indicator
AC & DC electrical breaker panels
Ground fault AC breakers
13.5 KW Diesel generator
Remote start generator panels
120 volt duplex receptacles
Heavy duty engine batteries
Generator battery
Fiberglass battery boxes

ELECTRICAL CTD

Battery switches
Cockpit spreader lights (24v)
Cockpit weatherproof duplex receptacles
Battery parallel
Ground fault receptacles in galley and head
Cable TV and shore cord
Engine room lights
Navigation lights
Single sideband counterpoise laminated
In deck house roof
Internal bonding system w/transom zinc plate
Bonded transom zinc plate
Power transfer switch

GALLEY

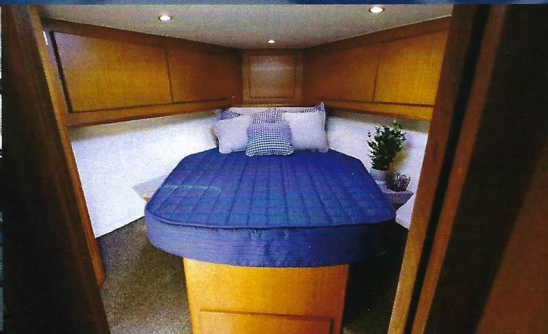
Built-in stainless steel microwave oven
Burner stove top
110volt duplex receptacles
Storage cabinet and drawers
Dual drawer refrigerator/ freezer
LVT Flooring
Solid surface countertops with sink

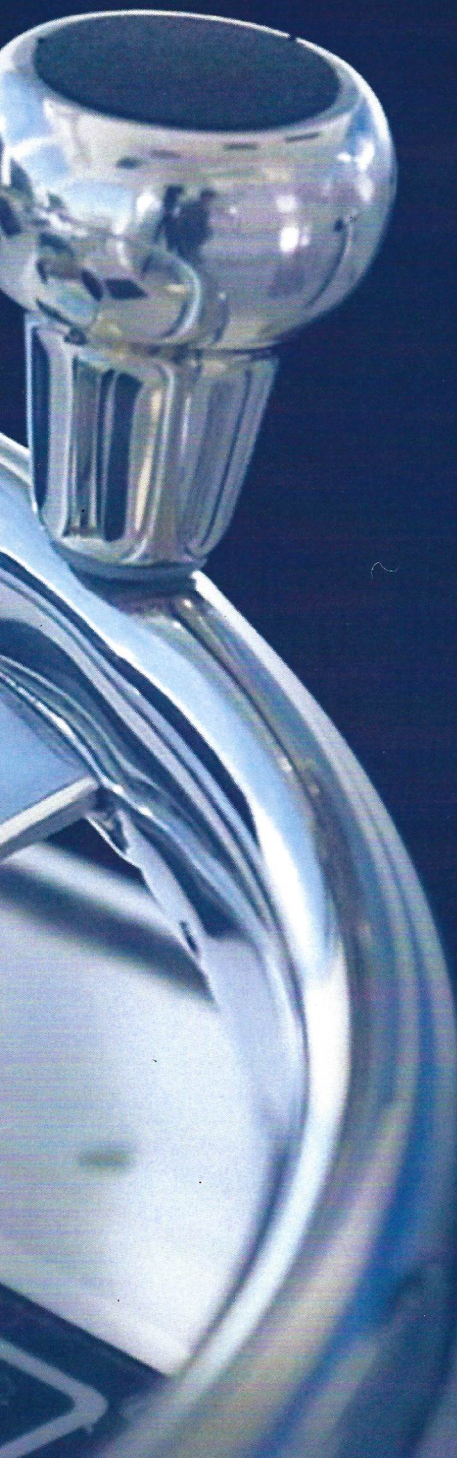
STATEROOMS

Choice of interior layout
Mattress, bedspread, shams, pillows
Choice of decorator fabrics and colors
Overhead hatch or porthole with screen
Carpeting
Cedar lined hanging lockers
Vinyl headliner

HEAD

Stall shower with door / shower sump pump
Electric toilet
Holding tank w/ macerator and level indicator
Y-valve
Medicine cabinet





HEAD CTD

Vanity with sink
110 volt receptacle
LVT flooring
Overhead hatch with screen
Vinyl wallcovering
Towel bar/Soap dish /toilet paper roll holder
Shower light
Storage compartments

OUTSTANDING FEATURES

Vinylester skin coat
Low maintenance materials interior & exterior
Molded one piece Deck /Cabin /Cockpit
Solid fiberglass hull bottom
Launch and make ready for delivery

HELM

Custom molded fiberglass hardtop with tempered glass on (3)sides & open rear bulkhead
Hydraulic steering
Molded fiberglass command console
Flush mount storage for electronics in console area
Dual air horn
Pompanette ladder back chairs for helm and companion seats with footrests (3)
Windshield wipers (3) and washer
Safety grab rails
Overhead lighting
Storage compartments

WATER SYSTEM

Pressure demand water pump
Accumulation tank
Hot water heater
Fiberglass water tank

COCKPIT /FISHING FEATURES

Walk thru transom door
Coaming bolster pads
Recessed cockpit steps
Gunnel lockers
Engine room access
Fishbox with pump out (2)
Tackle center
Saltwater wash-down system
Livewell with pump
Freshwater wash-down system
Reinforced Cockpit sole for fighting chair
Cockpit sink
Recessed stern cleats

DECK OUTFITTING

Deck hatches
Fiberglass bow pulpit w/ anchor roller
Aluminum bow rail
Non-skid decking
Stainless steel cleats
Deck pipe
Heavy duty rubrail w/stainless steel insert
Thru bolted hull to deck joint

SALON

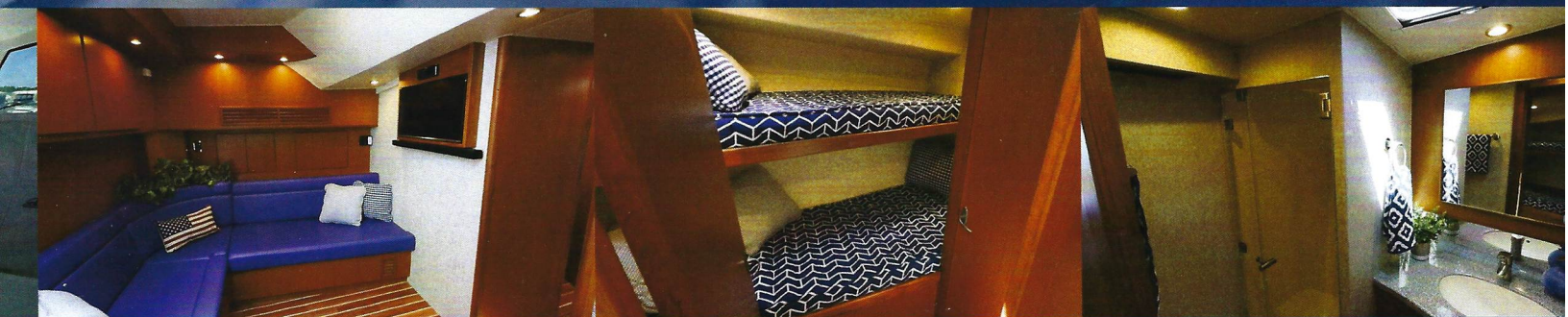
Entertainment center with TV
Stereo System with CD/DVD/Speaker
Storage cabinets
Door with security lock
Overhead lights
Teak interior
Vinyl headliner
LVT flooring
Choice of decorator fabrics and colors
Built-in seating

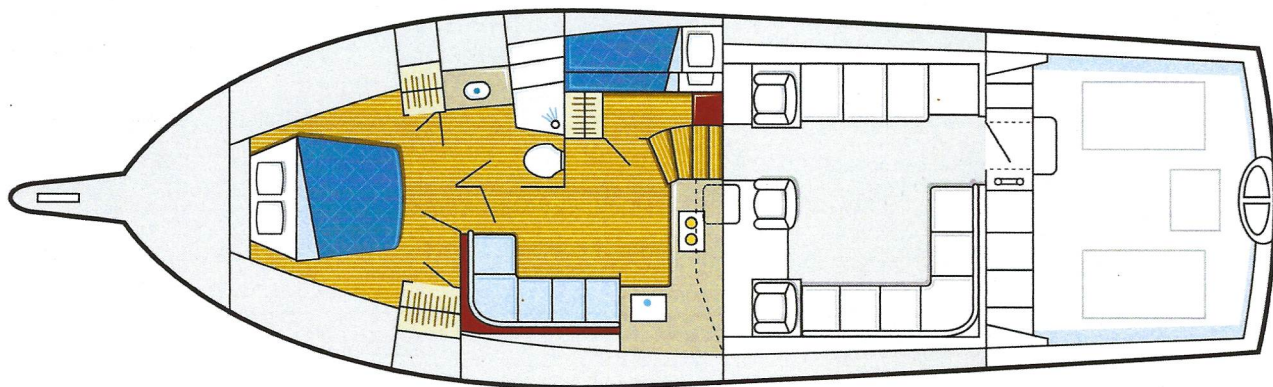
SAFETY AND NAVIGATION

Watertight hull compartment
Aluminum hand rails
Anchor
300' anchor line
Flare kit
Six type 1 life jackets
Ring Buoy
Fog bell
Portable fire extinguishers
(6) dock lines 25'
Choice of std. bottom paint color
Choice of std boot stripe paint color

OPTIONAL EQUIPMENT

Canvas enclosure
Rod holders
Outriggers / Center rigger
Fighting Chair
Windlass
Custom electronics
Paint name and port on transom
Fuel
Colored Hull
Helm air conditioning 18,000 btu
Refrigerated fish box
Cockpit freezer





198 Hilton Avenue
Bayville, NJ 08721

(732) 269-1180 phone Henriques@henriquesyachts.net
(732) 269-1606 fax www.henriquesyachts.com